

CHINOOK

Volume 44, Number 19 The Newsletter of Columbia River Mensa Sept-Oct, 2008

<http://www.crm.us.mensa.org>

ELLENSBURG BRUNCH: The first Saturday at 11:00 am—We're back at Café Nicholas (601 W. University Way, Ellensburg; 925-3544). Ask for the Mensa table or look for the table with the nerds. There will be two upturned wine glasses on the table, but only if I remember to bring them. .

Co-coordinators, Alix Drake-Williams and George Drake. Contact: EasternCascadesArea@crm.us.mensa.org
Regarding share rides: locsec@crm.us.mensa.org.

MONTHLY DINNER MEETING 6:00 p.m. the 4th Saturday of each month:

September: Casa Mia, 2541 W Kennewick Ave, Kennewick

October: Emerald of Siam, 1314 Jadwin Ave (in the Uptown Shopping Center), Richland

November: Katya's Bistro & Wine Bar, 430 George Washington Way, Richland



MOVIE NIGHT 6:00 p.m., 3rd Saturday of each month

Tim Dees hosts a monthly movie night [at his home](#). We never know what we're going to watch until everyone gets there. The selection is made from Tim's DVD and TiVo collection, or from DVDs that people bring. Tim provides some beverages and light snacks, and you are welcome to bring something to share. Friendly (sometimes too friendly) dog on the premises, as is a 52-inch LCD TV, surround sound system, and comfy chairs. E-mail tim@timdees.com with questions.

Other suggestions are welcome. Email Mark Mitchell at Locsec@crm.us.mensa.org.

WEBSITE REMINDERS

If you have forgotten where the next meeting will be and have lost your newsletter, don't panic - our website (<http://www.crm.us.mensa.org>) now has all upcoming events shown on the front page.



Publicity Person Leaves

We need a new person to handle our publicity. Alma no longer has the time, but was getting out posters and brochures to all libraries, members, high school and college staff, Hanford businesses, keeping prospect email lists, sending prospect test notices, keeping media email lists, sending media test announcements, etc. The new person can take over her electronic files, or several people could take parts of the task. Without it our testing population is very apt to shrink in the future.

Support students, teachers and researchers! Donate to the Mensa Foundation at www.mensafoundation.org and click on “Make a Donation.”



The Mensa Research Journal unlocks the door to your own knowledge and understanding. Subscribe Today at www.mensafoundation.org

For more than 30 years, the Mensa Education & Research Foundation has been a strong voice in supporting intelligence, and now it has a voice you can hear.



Introducing the Mensa Education & Research Foundation podcast “Conversations with Mensa,” available for listening or download at <http://www.mensafoundation.org/conversations>.

Each Conversation features up to 45 minutes of dialog between Mensans and experts in fields related to the Foundation’s educational mission. A Conversation on “Women and Creativity” has recently been produced as part of the Mensa Research Journal series. Another Conversation on “The Art of the Bluff” has been produced as part of the “Our Curiosity Shop” series. A series linked with our Colloquiums is planned to launch in the near future.

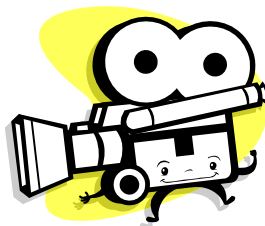
Visit the Conversations pages anytime to take part in this exciting new program! That’s <http://www.mensafoundation.org/conversations>

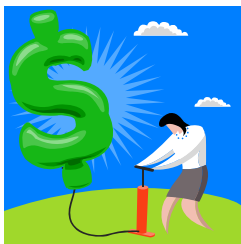
Mensa filmed by 60 Minutes - As you may know, Lesley Stahl of 60 Minutes attended the Annual Gathering in July and filmed for an upcoming story about Mensa. At this time, we do not know the exact date the story will air, but her producers have indicated that it will be this fall.

We’re working hard to capitalize on the publicity Mensa will receive from this program. Staff members are gearing up for an increase in inquiries, and there are preparations that Local Groups can make as well.

Please look for a memo in your monthly mailing with ideas on how to promote your group before and after the Mensa 60 Minutes segment airs. If you have any questions, please contact the National Office at nationaloffice@americanmensa.org or toll-free 888/294-8035 ext. 199. As soon as we know the date the segment will air, we will post that information to NewsFlash and our officer elists.

Dr. John Sheehan
AML Development Officer





Membership Dues to Increase—As you may have heard, American Mensa’s annual dues will increase to \$59 beginning on Jan. 1, 2009; the cost of multi-year membership plans will also go up. This increase is necessary because of rising costs due to inflation, particularly in the areas of fuel, paper and postage.

However, members can renew on or before Dec. 31, 2008, in order to “lock in” the current membership rates, and I’m letting you know this so that you can get the word out in your newsletter about the upcoming change. Members who wish to renew early can visit www.us.mensa.org/renew or call 888/294-8035 ext. 199 to renew with a 1-year, a 3-year, 5-year or Life Membership.

Heather Spillers
National Groups Coordinator
American Mensa Ltd.
817-607-0060 ext. 5528
heathers@americanmensa.org

The news item that has been submitted to the Mensa Bulletin for publication follows:

Dues to Increase January 1

Inflation rates across the country have soared in the past year, and American Mensa has felt the impact throughout our budget. In the past year, expenses in areas including fuel, paper and postage have increased nearly 45%. We have balanced most of these increases by “tightening our belts” in every budget category, but a dues increase has still become necessary.

Effective January 1, annual dues will increase to \$59. Second family member rates will increase to \$39, 3-year memberships to \$160 and 5-year memberships to \$260.

Please note, you may renew at the current rates until December 31, 2008. Visit www.us.mensa.org/renew or call 888-294-8035 ext. 199 to renew this year and lock in current rates for a 3-year, 5-year or Life Membership.

Hello Friends of the Reno RG,

We have decided to do what we can to fight the high cost of travel and have capped the Registration fee for the Reno RG at \$75.00.

Of course in order to make this worth anything you have to sign up for the party.

http://northernnevada.us.mensa.org/index_Page1186.html

We have chocolate, dancing girls, and more ways to get into trouble than any Mensa event to date. Do you really want to miss this gathering?

There are a couple of seats left for the Texas Hold'em Tournament and a few more spots for the tours, but don't wait too long.

A note to those with disabilities or special needs: We have toured the gathering location and tried to anticipate any problems or difficulties and have the complete cooperation of the hotel staff in making your stay a wonderful experience. So don't let that scooter keep you from joining us.

If you need any answers or information regarding the Biggest Little Reno Gathering, please contact us at :

Ken Wright

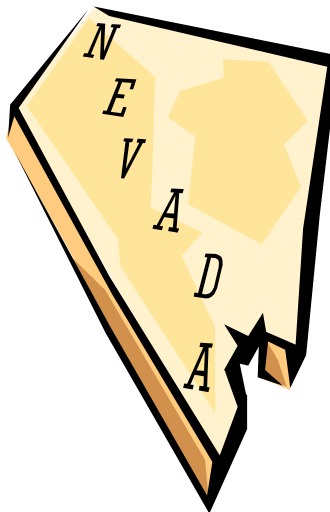
510 Michael Drive

Fallon, NV 89406

775-423-4694

Ken strtwlkr2@charter.net

Anna pirsqrd@charter.net





Come play with US!

Register NOW
and join in the first-ever
RENO Regional Gathering!

This party will be October 3-5,
2008 at the Silver Legacy

Resort in downtown Reno, Nevada. This fabulous three-casino
property with 22 restaurants and entertainment around every
corner is a great setting for the hottest Mensa ticket this fall.

Enjoy the Reno area....

- * Cruise the beautiful blue waters of Lake Tahoe!
- * Explore historic Virginia City, home of the Comstock Lode and
Mark Twain's old stomping grounds.
- * Tour a Nevada brothel and get the real scoop!

Just few tasty tidbits from our menu....

- * Cutting-edge energy alternatives * Burning Man Festival
- * Belly Dancing * Electric Cars * Healing Powers of the Mind
- * Aboriginal Canadian Women in today's world
- * Virtual tour and discussions of current conditions and politics
in China and Tibet

And meet... a fellow Mensan who trained his own service dog

- * a Donner Party survivor portrayed by local Chatsaugua professional
- * a Native American with a humorous view of American culture

June/July registration: \$75

August/September and at the door: \$90

Northern Nevada website <http://northernnevada.us.mensa.org/>



Northwest Passages

by John Recht

RVC, Region 8

rvc8@us.mensa.org

Last month I spoke about the Governance Project that the American Mensa Committee (AMC) has undertaken with the help of Tecker Consultants. The next major step in this process will take place in November at the AMC's annual planning meeting. At that time the AMC will have the chance to make substantial, ongoing changes in the way it operates, beginning with the development of a solid strategic plan. This plan will help better define authority and responsibility of the AMC, officers, committees and staff, as well as set tangible goals and the measurements for success.

Critical to the success of this plan will be for the AMC to choose goals that will be important to the ongoing growth and development of American Mensa. As the AMC spends proportionately more of its time making decisions that are more strategic in nature, it will correspondingly find less on its plate that pertains to the development of rules and procedures. Increasingly, authority will be delegated to staff and committees to follow up with what needs to be done in the organization.

What are the goals that will be important to American Mensa? Between now and November the AMC members will be discussing their ideas about what the goals should be and how the current list of short-term and long-term goals should be revised. What would help us tremendously at this time would be to have interested members weigh in with their ideas and feedback about the Governance Project and the strategic planning process now underway, as well as specific goals that they believe would be of benefit to the society. If you would like to participate, please send your ideas to me at rvc8@us.mensa.org, and keep an eye on the American Mensa Web site for information about the process as it develops.

In closing, I would like to remind you that three excellent Regional Gatherings are approaching, and now is the perfect time to register for them if you haven't already. The first of these will be the Reno Regional Gathering (RG) taking place October 3-5. Biggest Little RG information and registration are available on the Northern Nevada Mensa Web site at <http://northernnevada.us.mensa.org/>. October 24-26 are the dates for Sacramento Regional Mensa's 25th Gold Country RG - High Q Silver....Away; please contact Rod Baker at drrodbaker@juno.com for registration information. And once again San Francisco Regional Mensa will be hosting their RG, Brilliance By the Bay, on Thanksgiving weekend (November 28-30). Details and a registration form are available at <http://www.sfmensa.org/rg.html>. Hope to see you at one or more of these events!

The October issue of the International Journal is now online at <http://www.us.mensa.org/ij> You'll want to select IJ Online Library from the left menu.

For any questions or comments about the International Journal, please contact Editor Kate Nacard at [<ijeditor@mensa.org>](mailto:ijeditor@mensa.org). If you have any trouble with your password while accessing our online publications, please email [<WebServices@americanmensa.org>](mailto:WebServices@americanmensa.org).

National & Regional Nominations—In accordance with the Bylaws and ASIEs of American Mensa, the National Nominating Committee has received CIFs from members interested in running for national and regional office, has met with a number of potential candidates at the AG, and has received additional information from them. At this time, after careful consideration, the Nominating Committee forwards the following names to the Election Committee and to the AMC as approved candidates:

POSITION NAME

Chair Elissa Rudolph	1 st Vice Chair Dan Burg
Chair Dave Swanka	1 st Vice Chair Cookie Bakke
2 nd Vice John Recht	
2 nd Vice Craig Thighe	

Secretary Judy Vasiliauskas	Secretary Guy Conti
Secretary Scott Rainey	Secretary Heather Poirier
Treasurer Cyndi Kuyper	RVC1 Lori Norris
Treasurer Cary Chilson	RVC2 Marc Lederman
RVC2 Lee Berkovits	RVC4 Ken Silver
RVC3 Betsy Mark	RVC5 Nicholas Sanford
RVC5 Bertha Clarke	RVC6 Ralph Rudolph
RVC7 George “Bud” Martin	RVC7 Peggy Pannke-Smith
RVC8 Debra Reiger	RVC9 Clark Jones
RVC9 Art Mattson	RVC9 Dottie Alt
RVC9 Lynda Evans	RVC10 Mel Dahl
RVC10 Thomas Thomas	RVC10 Mary Kay Dailey

I would like to thank the hard-working members of the National Nominating Committee for their time and effort.

Susan Heimlich

Chair, National Nominating Committee

NomComm@us.mensa.org

Officer Timeline

Updated August 30, 2008

Reminders Upcoming Events Recruitment Efforts

September 2008

8th - Monthly mailing to Local Group officers

12th - Funding statement sent to Treasurers

12th-14th - Genealogy Colloquium, Salt Lake City, Utah.

14th - Foundation Board Meeting, Salt Lake City, Utah.

15th - Address change deadline for October Bulletin

19th - Funding transferred to Local Group checking

30th - Cut-off for changes (address, officers, or distribution) for monthly mailing in October

30th - Cut-off for newsletters and test session recap forms for funding transferred in October

Minutes of the March 29, 2008 AMC meeting are now online.

Visit <http://www.us.mensa.org/meetingreports>

Select 2008-03 Meeting Reports, then Minutes.

You'll need to log in to the Web site to access this document. If you don't have your login information available, please contact WebServices@americanmensa.org or call 888/294-8035 x5005.

J. Howard Prince

Director of Operations

American Mensa, Ltd.

howardp@americanmensa.org

817/607-0060 x5511



Dates to Ponder

September

- 15 - Greenpeace founded in 1971
- 16 – Great Seal of the U.S. first used (1792) on prisoner of war agreement with Great Britain
- 18 – U.S. Air Force established in 1947
- 22 – Michael Faraday birth anniversary (1791)
- 22 – Office of Postmaster General established in 1789
- 23 – Planet Neptune discovered in 1846. Neptune takes 164.8 years to revolve around the sun.
- 26 – “Johnny Appleseed” (John Chapman) birth anniversary (1774)

October

- 2 - Mohandas Karamchand Gandhi birth anniversary (1869)
- 2 - Name Your Car Day
- 4 – Sputnik I launched by USSR; first successful man-made space satellite
- 6 - U.N. World Habitat Day; first observed in 1986
- 9 - National Dessert Day
- 14 – Peace Corp anniversary (1960)
- 18 – Water Pollution Control Act enacted in 1972
- 26 – Erie Canal opened in 1825

Local Officers			
Local Secretary	Mark Mitchell	851-4668	Locsec@crm.us.mensa.org
Newsletter Editor	Beret Ing	(509) 882-2104	Editor@crm.us.mensa.org
Local Areas			
Eastern Cascades	Alix Drake-Williams George Drake	(509) 933-3117	EasternCascades@crm.us.mensa.org
Far North	Frances Rios		FarNorthArea@crm.us.mensa.org
All opinions herein are those of the authors and not those of Columbia River Mensa or of American Mensa Ltd. Mensa as an organization has no opinions.			