

CHINOOK

Volume 36, Number 11

The Newsletter of Columbia River Mensa May-June, 2007

<http://www.crm.us.mensa.org>

ELLENSBURG BRUNCH: The first Saturday at 11:00 am, at The Palace Café 323 N Main St Ellensburg, WA 98926 (509) 925-2327 (thepalacecafe.net).

The table will be marked with two wine glasses turned upside down. If you want to make a trip of it, you could come for the First Friday Art Walk and stay for Mensa Brunch on Saturday. Co-coordinators, Alix Drake-Williams and George Drake. Contact: EasternCascadesArea@crm.us.mensa.org Regarding share rides: locsec@crm.us.mensa.org.

MONTHLY DINNER MEETING 6:00 p.m. the 4th Saturday of each month:

June 23: Heritage Restaurant, Toppenish

July 28: El Durango, 107 E Columbia Drive, Kennewick (former Casa Chapala, near Clover Island)

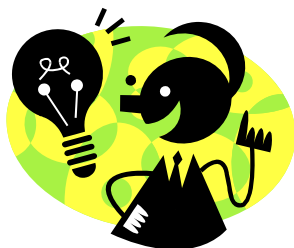
August 25: Casa Mia, 2541 W Kennewick Ave, Kennewick

Other suggestions are welcome. Email Mark Mitchell at Locsec@crm.us.mensa.org.

From your Chinook editor:

I have been attempting to come up with ideas for more local news in our Chinook. However, since more heads are sure to come up with more ideas, I am asking your assistance in this endeavor. Please let Mark or me know of any ideas YOU have for local input. So far, I have come up with only two suggestions. One is to have all of you submit your birthday (you don't need to put in the year, just the month and day). That way, we will be able to wish you a happy birthday from all of us. Two is to have you submit poems, clean jokes, or short stories (no more than two pages) to share with your fellow Mensans. Another member has suggested that we run "classified ads." The only problem with this is that we are currently publishing only bi-monthly, so your item(s) would not necessarily get the coverage you would need. That said, I welcome your ads.

Beret



The June issue of the International Journal is now online at www.us.mensa.org/ij
<www.us.mensa.org/ij> You'll want to select IJ Online Library from the left menu.

For any questions or comments about the International Journal, please contact Editor Kate Nacard at ijeditor@mensa.org. If you have any trouble with your password while accessing these online publications, please email WebServices@americanmensa.org.

A site is still needed for the AMC meeting for March, 2008. If any group is interested in hosting this meeting, please submit the AMC Meeting Bid forms found on the website to the Site Selection Committee and National Office no later than June 9. This is the last opportunity a group will have to submit a bid to host the March meeting. If you have any questions, please contact Cyndi Kuyper at RVC4@us.mensa.org <<mailto:RVC4@us.mensa.org>> .

Mind Games

More than 200 Mensans gathered in Pittsburgh this weekend for Mind Games 2007. During the three-day event, members played and rated 59 board and card games. The top five games have earned Mensa Select distinction and may use the Mensa Select seal on their games.

The winners are:

Gemlock (Pywacket, www.pywacketgames.com)
Gheos (Z-Man Games, www.zmangames.com)
Hit or Miss (Gamewright, www.gamewright.com)
Qwirkle (Mindware, www.mindwareonline.com)
Skullduggery (Outset Media Games, www.outsetmedia.com)

Mind Games 2008 will be held April 11-13 in Phoenix. To register, visit www.mindgames.us.mensa.org.





Northwest Passages
by John Recht
RVC, Region 8
rvc8@us.mensa.org

It's another late night (May 10), not my favorite time to write, but it's deadline time again. Not only that, but the Oregon Mensa Regional Gathering (RG) starts tomorrow, and I have a ton of stuff still to do for that. Once the RG is done, I'll be back at work on the draft Gatherings Handbook, which I am determined to finish in time for the American Mensa Annual Gathering (AG), and at the same time, I am watching over several other handbook updates. Oh, and I'll have blurbs to write for the Leadership Development Workshop sessions that I will be leading at the AG. The computer and I will commune quite a bit in the weeks to come. As usual.

So let's see, should I tell you the Great Idea I had for an icebreaker for the Oregon Mensa RG today? I will consult the Magic 8-Ball: it says, "As I see it yes." OK, then. I was pretty bored with the game of finding people who had done all sorts of things, and couldn't find an icebreaker online that I wanted to use, so I made up my own. Here are the instructions:

Each registered guest at the RG will receive a sheet of instructions for this game, with a slip of paper stapled to it that gives him or her a secret set of randomly selected attributes in seven categories. The categories are COLOR, TASTE, SHAPE, SOUND, TEXTURE, TRUTH/LIE, and NUMBER. The object of the game is to determine the correct attributes in all of the above categories for at least four different people, not including yourself, of whom at least two must have the attribute "Truth" and at least two must have the attribute "Lie." All those who submit entries meeting the above conditions will be entered in a prize drawing to be conducted at the brunch on Sunday. There will also be a prize for the entry with the correct attributes for the greatest number of people.

The list of all attributes for each category is as follows:

| <u>COLOR</u> | <u>TASTE</u> | <u>SHAPE</u> | <u>SOUND</u> | <u>TEXTURE</u> | <u>TRUTH/LIE</u> | <u>NUMBER</u> |
|--------------|--------------|--------------|--------------|----------------|------------------|---------------|
| Red | Sweet | Triangle | Beep | Prickly | Truth | 1 to 150 |
| Yellow | Sour | Square | Honk | Rough | Lie | |
| Blue | Salty | Circle | Aaogah | Smooth | | |
| Green | Bitter | | | | | |
| Purple | Umame | | | | | |

In the game, when you meet someone and ask them, he or she must tell you his or her

correct NUMBER. In order to determine their other attributes, you must ask them direct questions, to which the answer must be "Yes" or "No." If the person asked has the attribute "Truth," he or she must always answer direct questions truthfully. If the person asked has the attribute "Lie," he or she must always answer direct questions untruthfully. Please do not reveal your own set of attributes to anyone except when asked directly, in the manner just described.

Next month I'll let you know how the icebreaker and the rest of the RG turned out. It's starting out well! The June issue of the *Mensa Bulletin* will have my annual report, but in my column for the region for July newsletters, I'll expand on that a bit more. Space is at a premium, of course. And time is for me, right now, so I'll close by reminding you to go to check out what is planned for the AG at www.ag2007.org/. It's simply the best event that Mensa has to offer, and I know I'll be there...without my computer.

| Local Officers | | | |
|---|-------------------------------------|----------------|--|
| Local Secretary | Mark Mitchell | 851-4668 | Locsec@crm.us.mensa.org . |
| Newsletter Editor | Beret Ing | (509) 882-2104 | Editor@crm.us.mensa.org |
| Local Areas | | | |
| Eastern Cascades | Alix Drake-Williams George Drake | (509) 933-3117 | EasternCascades@crm.us.mensa.org |
| Far North | Frances Rios | | FarNorthArea@crm.us.mensa.org |
| All opinions herein are those of the authors and not those of Columbia River Mensa or of American Mensa Ltd. Mensa as an organization has no opinions. | | | |